



**INSPIRING
IMAGES.
SINCE 1917.**

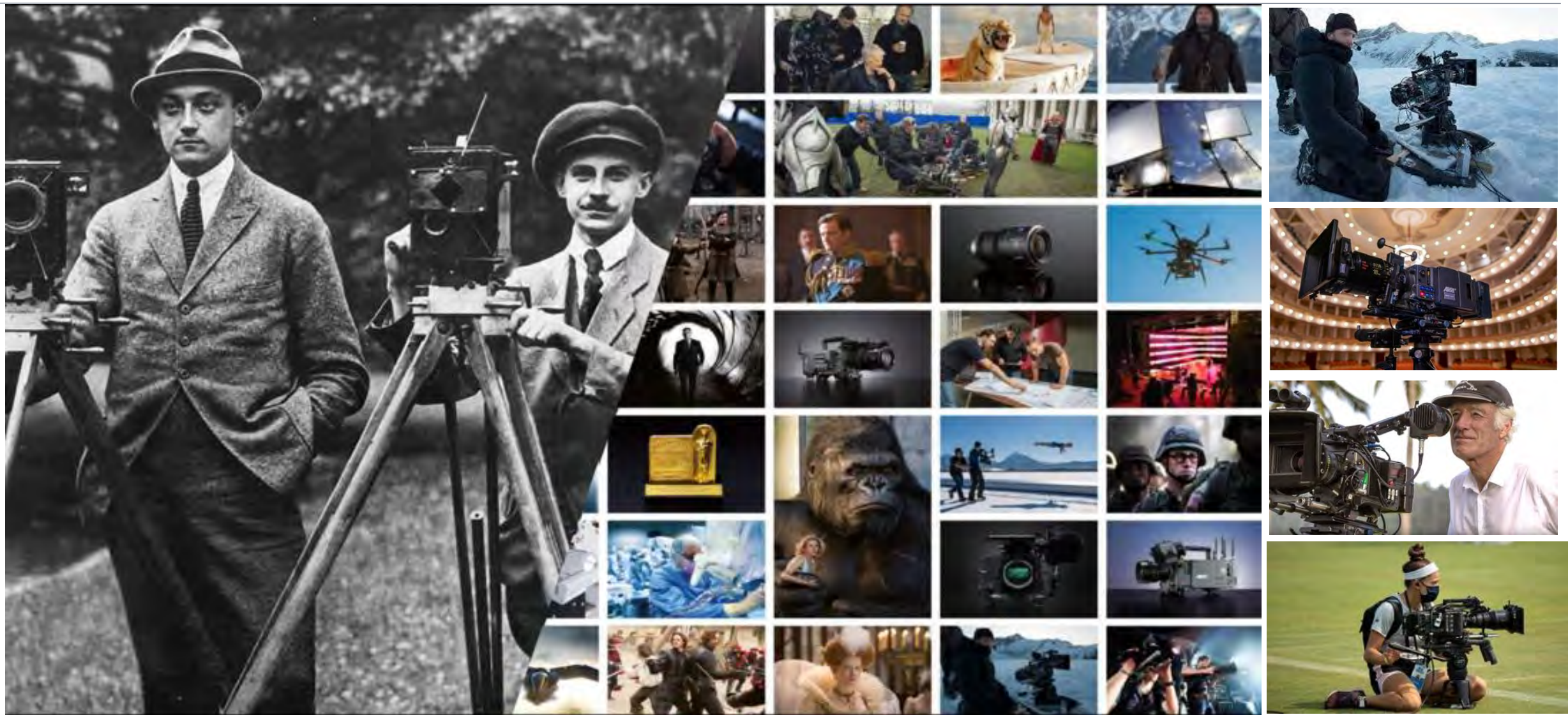


ALEXA 35 Live - Multicam System



MAF Milan 2024
Nataschia CHROSCICKI
Director of Business Development
France, Italy, Benelux, North Africa, Malta

ARRI, 107+ YEARS – wide range of products Film and Broadcast industry



ARRI Business Units

Connecting creativity and future technologies for moving images

Camera Systems



The most complete camera systems ever built

Lighting



Advanced lighting products with state-of-the-art control options

Claypaky



Advanced lighting products for the entertainment industry

Solutions



Designing and delivering cutting-edge production environments

Rental



Exceptional services and exclusive products

ARRI®

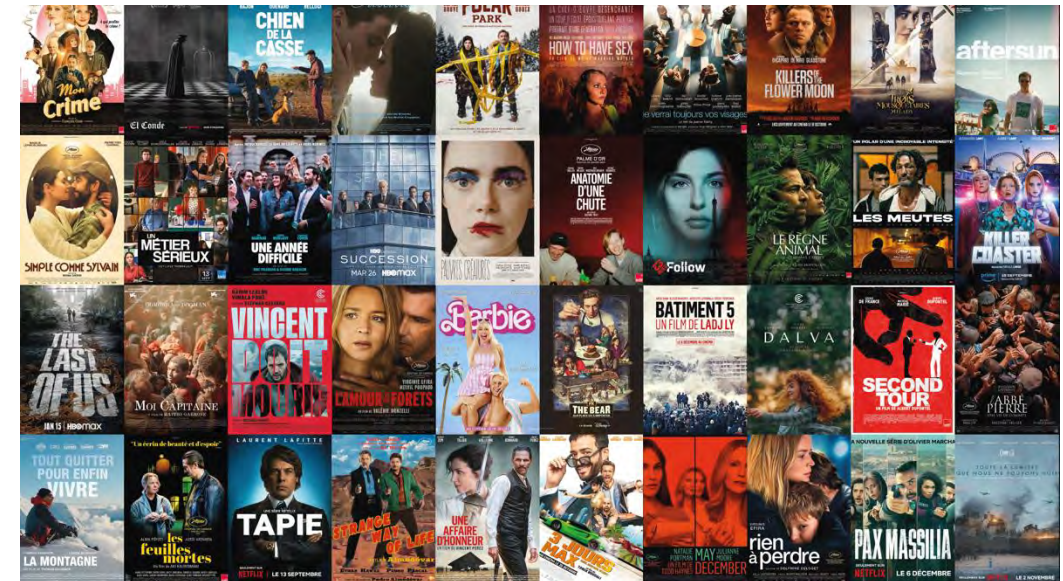
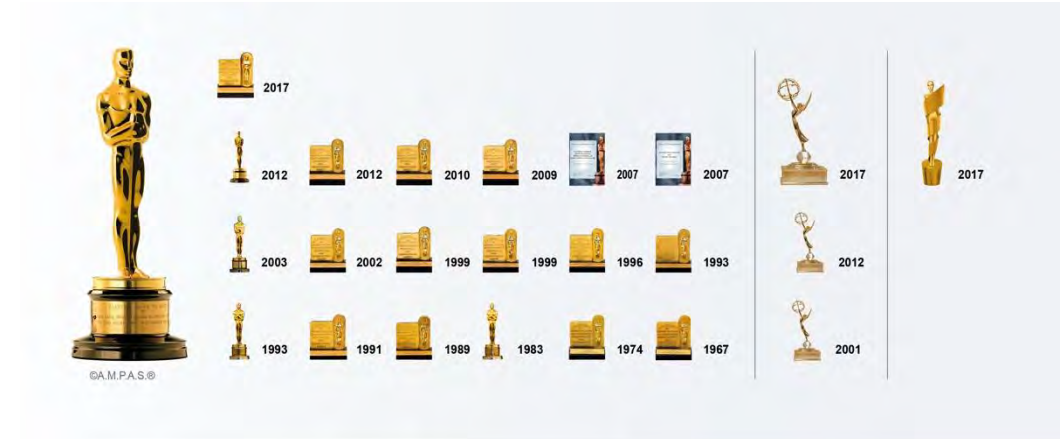


**WHY ARRI IN
LIVE PRODUCTION?**

ALEXA 35 LIVE - MULTICAM SYSTEM



- **ARRI is the strongest cinematic brand in the world**
 - Global manufacturer of motion picture equipment & provider of services to the motion picture industry
 - ARRI's award winning gear & services are the first choice of leading filmmakers on high-end movies, dramas, commercials and documentaries
 - ARRI products are known for the best cinematic image quality, highest reliability and easy and intuitive workflows



ALEXA 35 LIVE - MULTICAM SYSTEM



ARRI equipment has been used for the last years in prestigious live productions

Concerts: Adele, David Guetta, Coachella Music Festival, Coldplay, Dua Lipa, Ed Sheeran, the Rolling Stones album launch

TV Shows: Netflix Comedy Specials, Amazon

Fashion shows: most prestigious brands Chanel, Balenciaga, Dior, etc...

Sports: NFL go-to choice of cinematic cameras, Nascar, ELF, WRC, Sky Austria Opening Football season



ALEXA 35 LIVE - MULTICAM SYSTEM

ARRI LOOK. SEAMLESS INTEGRATION.



- **A major commitment to the live entertainment sector**
- **A complete solution**
 - The cinematic ARRI Look in Super 35 4K HDR
 - Fully featured fiber solution including SMPTE 2110
 - Seamless integration into live production environments
 - System camera capabilities in a dockable camera setup



ALEXA 35 LIVE - MULTICAM SYSTEM

MAIN COMPONENTS OVERVIEW



ALEXA 35 Live & Fiber Camera Adapter



Fiber Base Station



Skaarhoj
Remote Control Panel



ARRI Multicam
Accessories



Live Production System LPS-1

ALEXA 35 LIVE - MULTICAM SYSTEM

ALEXA 35 LIVE CAMERA

- **Based on ALEXA 35**
 - ARRI's most popular and most advanced camera to date
 - ALEXA 35 Live has the same hardware as ALEXA 35; same sensor, same image processing ...
- **... same cinematic ARRI look**
 - Super 35 4K sensor: shallow depth of field
 - Exceptional 17 stops of dynamic range: handle any lighting situation
 - Capture the full range of even extremely contrasty concert lighting
 - Capture sports events equally well in bright sun and dark shadows
 - Best for HDR images
 - REVEAL color science: wide gamut and accurate, natural colors
 - Especially good for bright and highly saturated colors and fine color shadings
 - High sensitivity: low noise in low light scenes
- **Result**
 - Best images in any lighting environment
 - The best skin tones in the business makes talent look great



ALEXA 35 LIVE - MULTICAM SYSTEM

ALEXA 35 LIVE CAMERA

- **Get creative to give the images your own, unique look**
- **ARRI Look Files**
 - In-camera Multicam Looks: tailor-made for typical live production situations (Talk Show, Game Show, Winter Sports, etc.)
 - In-camera ARRI Look Library: 87 pre-made unique cinematic looks that can be activated at the push of a button
 - Custom looks: create your own special look
- **ARRI Textures**
 - Unique to ALEXA 35 and ALEXA 35 Live cameras
 - Sophisticated custom grain and contrast settings
 - In-camera: 8 cine-style ARRI Textures
 - In-camera: 5 new Multicam ARRI Textures with different sharpening levels to match images
 - ARRI website: more ARRI Textures for download

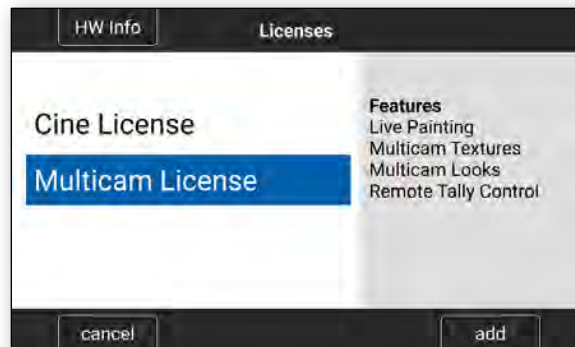


ALEXA 35 LIVE - MULTICAM SYSTEM



ALEXA 35 LIVE CAMERA

- **Other camera features**
 - Up to 60 fps
 - PL Mount (Hirose)
 - Modular lens mounts offer a wide choice of lenses including LPL, PL, EF, B4
 - In-camera full-quality ProRes recording (LogC4)
 - Multicam license included
 - Live painting
 - Multicam looks
 - Multicam textures
 - Remote tally control
 - Optional upgrade available to full ALEXA 35 features with Cine license



Feature	ALEXA 35 Live	ALEXA 35
Fps	0.75 - 60 fps	0.75 - 120 fps
Lens Mount	PL Mount (Hirose)	LPL Mount (LBUS)
Recording Modes	Standard	Standard, Pre-recording
Recording Codecs	ProRes	ProRes, ARRIRAW
Sensor Modes	4K 16:9 4K 2:1 3.8K 16:9 2K 16:9 S16	4.6K 3.2 Open Gate 4.6K 16:9 4K 16:9 4K 2:1 3.8K 16:9 3.3K 6:5 3K 1:1, 2.7K 8:9 2K 16:9 S16
Anamorphic Desqueeze	No	Yes
Color Management	ARRI	ARRI, Custom
Included License	Multicam	Cine

ALEXA 35 LIVE - MULTICAM SYSTEM

ALEXA 35 LIVE CAMERA



- **Stand-alone operation**

- The features of a system camera in a dockable multicam setup
- Fiber Camera Adapter can be easily removed for stand-alone use of camera on ARRI TRINITY Live, Spidercam, cranes, gimbals
- With in-camera recording and for attaching a wireless transmitter

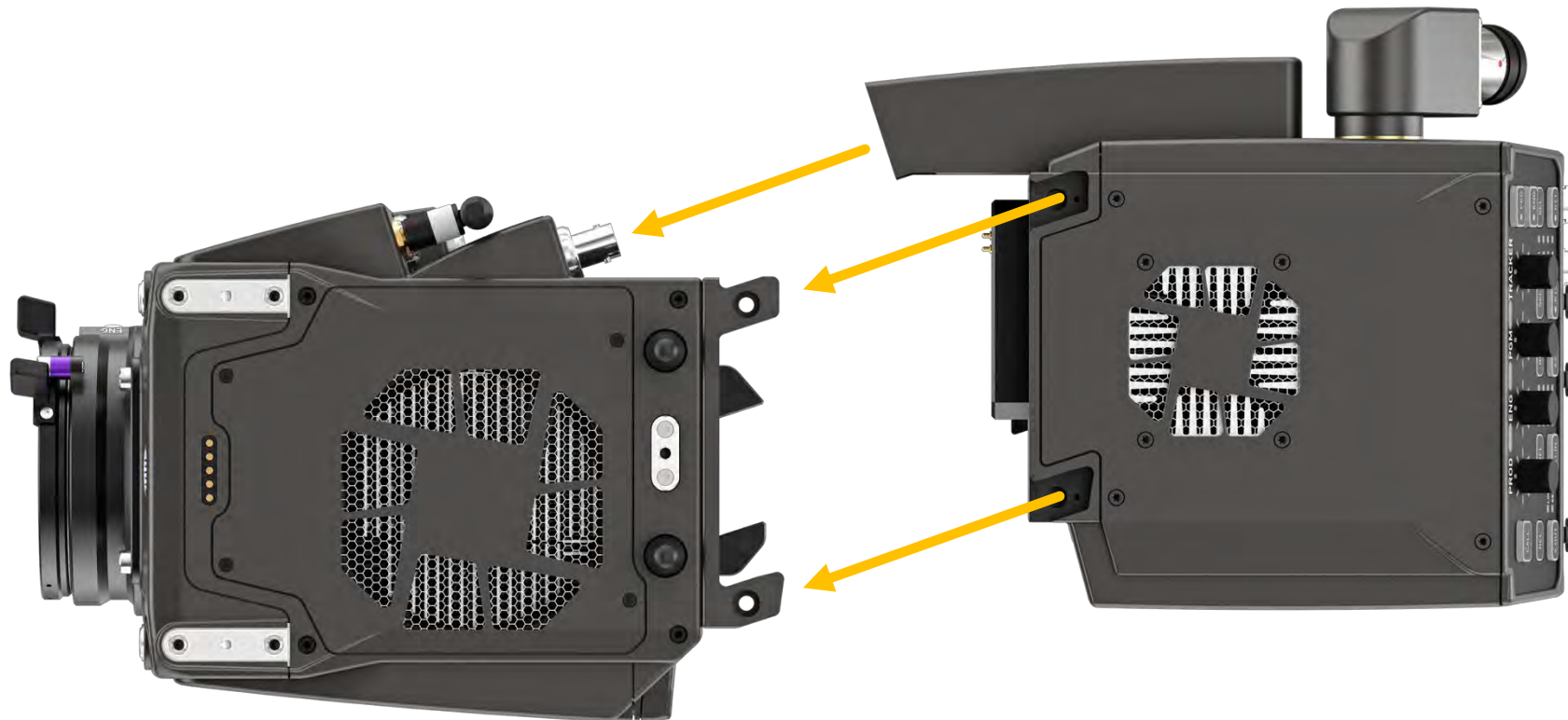


ALEXA 35 LIVE - MULTICAM SYSTEM

LPS-1 FIBER CAMERA ADAPTER



- **Attaches easily and with minimum cabling to ALEXA 35 Live or ALEXA 35**
 - Sturdy angled keys of Fiber Interface Plate FIP-1 securely guide FCA onto camera



ALEXA 35 LIVE - MULTICAM SYSTEM

LPS-1 FIBER CAMERA ADAPTER

- **Attaches easily and with minimum cabling to ALEXA 35 Live or ALEXA 35**
 - Sturdy angled keys of Fiber Interface Plate FIP-1 securely guide FCA onto camera
 - 1x cable: FCA to Ethernet cable



ALEXA 35 LIVE - MULTICAM SYSTEM

LPS-1 FIBER CAMERA ADAPTER



- Familiar and intuitive controls for camera operators
- Full complement of industry-standard interfaces
 - SMPTE 311 hybrid cable
 - 2 channel intercom
 - Audio in and out, MIC & LINE level, analog & digital, with or without 48V
 - 4 RETURN video inputs selectable on two separate controls
 - GPIO, TRACKER, etc.
- Unique features
 - SMPTE 311 cable: uncompressed 4K transmission over 2 km with power
 - Up to 400W available for camera and 12V or 24V accessories
 - Camera can also be powered externally to use tactical fiber of up to 10Km
 - Separate fiber tunnel for additional video, audio or control signals
 - Separate Ethernet tunnel for any Ethernet enabled device like a separate focus assist
 - Local RCP connection



ALEXA 35 LIVE - MULTICAM SYSTEM

LPS-1 FIBER CAMERA ADAPTER



- **Familiar and intuitive controls for camera operators**
 - CALL Signals camera operator wants to talk
 - PROD Volume of production intercom
 - ENG Volume of engineering intercom
 - PGM Volume of program audio on intercom
 - TRACKER Volume of tracker intercom
 - PRD Enables intercom production channel microphone
 - ENG Enables intercom engineering channel microphone
 - REL Push release button to make a change with A OUT button
 - A OUT Switches between AES or analog line level for A OUT when REL is pushed
 - REL Push release button to make a change with A1 IN button
 - A1 IN Switches between MIC 48V/MIC/LINE/AES for A1 IN when REL is pushed
 - REL Unlocks (releases) the A2 IN button
 - A2 IN Switches between MIC 48V/MIC/LINE/AES for A2 IN once unlocked
 - SEL Selects one of the four return in channels for allocation to RET2 button
 - RT2 Switches from PGM video to the selected return in channel
 - SEL Selects one of the four return in channels for allocation to RET1 button
 - RT1 Switches from PGM video to the selected return in channel

ALEXA 35 LIVE - MULTICAM SYSTEM

LPS-1 FIBER CAMERA ADAPTER



Connectors

- HEADSET XLR 5-pin socket for intercom headset
- A OUT XLR 3-pin plug for AES or analog line audio out
- A1 IN XLR 3-pin socket for audio input 1 (MIC 48V/MIC/LINE/AES)
- A2 IN XLR 3-pin socket for audio input 2 (MIC 48V/MIC/LINE/AES)
- FIBER Lemo 3K SMPTE 311M fiber connector (socket)
- AUX FIBER Neutrik Opticon connector for auxiliary fiber tunnel
- 12V/4A Lemo EGG socket for 12V accessory power output*
- 12V/2A Lemo EGG socket for 12V accessory power output
- 12V/2A Lemo EGG socket for 12V accessory power output
- 24V/4A ARRI RS Lemo socket for 24V accessory power output*
- GPIO Hirose 10-pin HR10A connector
- TRACKER Hirose 20-pin HR10A connector
- SDI1 OUT BNC Monitor out (= ALEXA 35 SDI 1 out)
- RET OUT BNC Monitor output of return video in from Fiber Base Station
- RCP PoE RJ45 Ethernet for direct RCP connection
- ETH RJ45 for auxiliary 1 Gbit/s Ethernet tunnel
- LLA PoE RJ45 Ethernet for Large Lens Adapter interface module for future use
- REF OUT BNC Genlock out
- AUX BNC Auxiliary/Teleprompter SDI out



* = only available when system is powered by SMPTE 311 fiber (INT)

ALEXA 35 LIVE - MULTICAM SYSTEM

LPS-1 FIBER BASE STATION

- **Designed for seamless integration into live production environments**
- **Full capabilities and interfaces**
 - 4x RETURN IN
 - 15x simultaneous SDI outputs, including 3G, 6G and 12G on single, dual or quad link
 - Simultaneous output of UHD and HD (progressive or interlaced)
 - SMPTE 2110 IP: Video, audio & control signals over Ethernet for cost-savings and easy scalability
- **In live production, reliability is king**
 - Safe through SMPTE 2022-7 redundant network for 2110 IP
 - Reliable operation through hot-swappable, redundant power supplies



ALEXA 35 LIVE - MULTICAM SYSTEM

LPS-1 FIBER BASE STATION

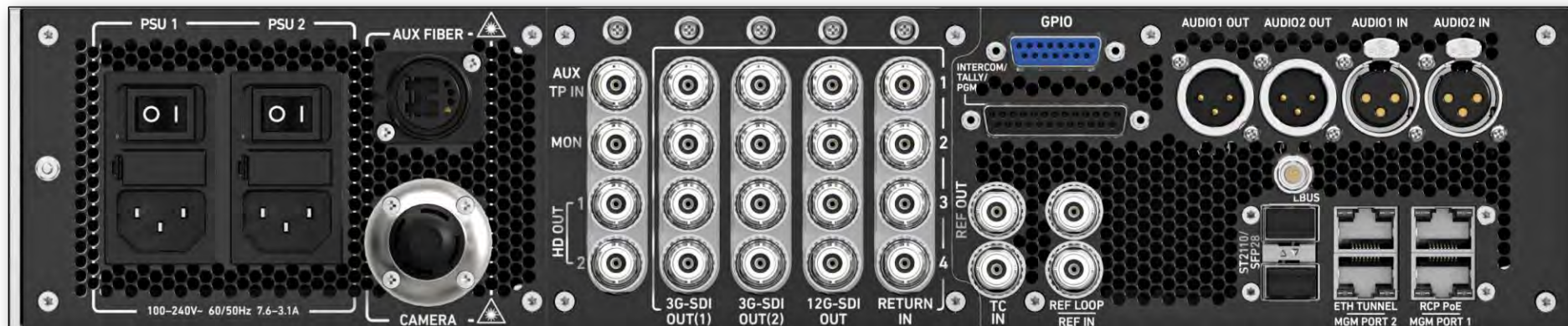


Connectors & Controls (front)

- RCP/MGM PoE RJ45 for RCP connection (PoE) or web interface
- TALLY Red, green and yellow tally indicator

Connectors (back)

- PSU 1 IEC 320 Universal AC mains power input (100 – 240V, 50/60Hz)
- PSU 2 IEC 320 Universal AC mains power input (100 – 240V, 50/60Hz)
- AUX FIBER Neutrik Opticon connector for auxiliary fiber tunnel
- CAMERA Lemo 3K SMPTE 311M fiber connector (plug)
- AUX TP IN BNC input auxiliary/teleprompter (SDI up to 12G)
- MON BNC output with status overlay (SDI up to 3G)
- HD OUT 1/2 2x BNC outputs for down converted HD signal (SDI up to 3G), progressive or interlaced
- 3G-SDI OUT (1) 1-4 4x BNC outputs for 4x single link 3G or 1x quad link 12G
- 3G-SDI OUT (2) 1-4 4x BNC outputs for 4x single link 3G or 1x quad link 12G



ALEXA 35 LIVE - MULTICAM SYSTEM



LPS-1 FIBER BASE STATION

▪ Connectors (back, continued)

- 12G-SDI 4x BNC outputs for up to 4x single link 12G or 2x dual link 6G
- RETURN IN 1-4 4x BNC inputs for return video (up to 3G)
- GPIO D-sub 15-pin for general purpose I/O
- INTERCOM/TALLY/PGM D-sub 25-pin for Intercom audio in/out, PGM audio in and Tally control (SONY style connector and pin-assignments)
- REF OUT 1x BNC output for active genlock (black burst or tri-level sync) derived from PTP or analog REF IN
- TC IN 1x BNC input for linear timecode
- REF LOOP 1x BNC loop output of genlock input signal (black burst or tri-level sync)
- REF IN 1x BNC input for genlock signal (black burst or tri-level sync)
- AUDIO1 OUT XLR 3-pin plug (line level or AES) for balanced analog or digital audio
- AUDIO2 OUT XLR 3-pin plug (line level or AES) for balanced analog or digital audio
- AUDIO1 IN XLR 3-pin socket (line level or AES) for balanced analog or digital audio
- AUDIO2 IN XLR 3-pin socket (line level or AES) for balanced analog or digital audio
- LBUS ARRI LBUS connector for future use
- ST2110/SFP28 SFP28 transceiver modules with LC fiber connector (up to 25G) for SMPTE 2110, primary or redundant
- ST2110/SFP28 SFP28 transceiver modules with LC fiber connector (up to 25G) for SMPTE 2110, primary or redundant
- ETH TUNNEL RJ45 for auxiliary 1 Gbit/s Ethernet tunnel
- MGM PORT 2 RJ45 for multicam web interface
- RCP PoE RJ45 for remote control panels (with power)
- MGM PORT 1 RJ45 for multicam web interface



ALEXA 35 LIVE - MULTICAM SYSTEM

BE FULLY IN CONTROL

- We are open to support other established RCPs
- **Current tool of choice is the Skaarhoj Remote Control Panel (RCP Pro ARRI V2B)**
 - Combines classical RCP handling with a powerful, fully customizable interface
 - Can be powered by PoE (Power over Ethernet)
 - Simple, free of charge SW update by user
- Live painting as with other RCPs
- **Extra features not found in other RCPs**
 - Greater camera and image control, including
 - Frame rate
 - REC start/stop for ISO reel in camera
 - Playback: play/pause, select clip, jog, playback speed
 - Select looks, Textures, camera setup files
 - Setting focus and zoom remotely
 - ASC CDL values: RGB slope, offset and power
 - Tint (green/magenta balance)



ALEXA 35 LIVE - MULTICAM SYSTEM

EASY SETUP & CONFIGURATION



- Local control of Fiber Camera Adapter and Fiber Base Station
 - Status and menu for local setup, configuration and diagnostics



ALEXA 35 LIVE - MULTICAM SYSTEM

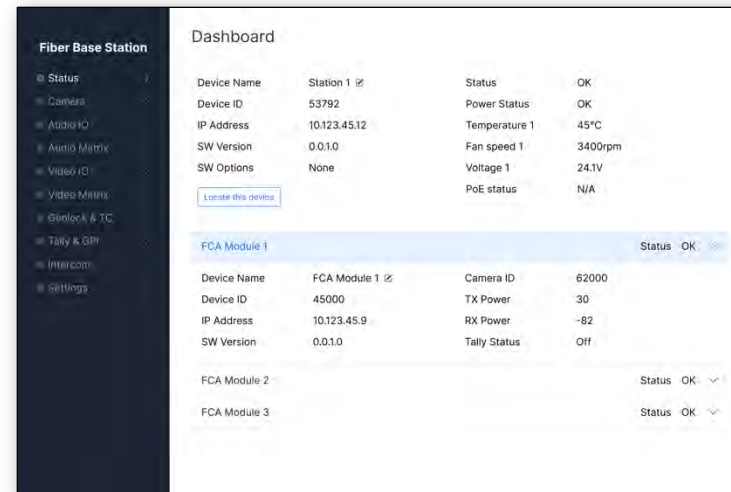
EASY SETUP & CONFIGURATION

- Control, configuration, diagnostics and SW updates: when and where you need it
 - ALEXA 35 Live camera: ARRI Webremote
 - Fiber Camera Adapter and Fiber Base Station: FCA/FBS web interface
 - Skaarhoj RCP: Skaarhoj Reactor web interface

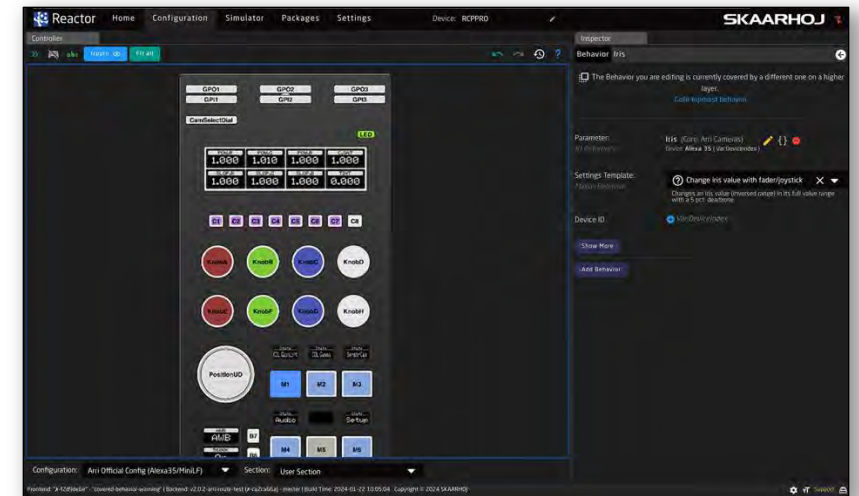
ARRI Webremote



FCA/FBS Web Interface



Skaarhoj Reactor Web Interface



ALEXA 35 LIVE - MULTICAM SYSTEM

MULTICAM ACCESSORIES



ALEXA 35 LIVE - MULTICAM SYSTEM

MULTICAM ACCESSORIES



▪ Tally Light Module

- LBUS tally light with 16-segment camera ID display
- Mount with RIA-1 bracket, use LBUS cable to camera



Tally Light Module
TLM-1

▪ Live Production Handle LPH-1

- Perfect balance and reach with numerous mounting points
- Compatible with LWS-6 for 15 mm rods
- Compatible with VMB-5 and MVB-1 viewfinder mountings



Live Production Handle
LPH-1

▪ CCM-1 for Live Production Set

- Camera Control Monitor CCM-1
- Monitor Yoke Support MYS-1L
 - One-handed, counterbalanced, four-axis monitor adjustment



Camera Control Monitor
CCM-1



Monitor Yoke Support
MYS-1L

▪ ARRI Touchdown System

- Lightweight, self-aligning, fast and secure new mounting system
- Built-in 15 mm rod support, ARRI rosettes and long shoulder pad
- ARRI Touchdown Base Plate TBP-1
- ARRI Touchdown Receiver Plate TRP-1



ARRI Touchdown System
TBP-1 & TRP-1



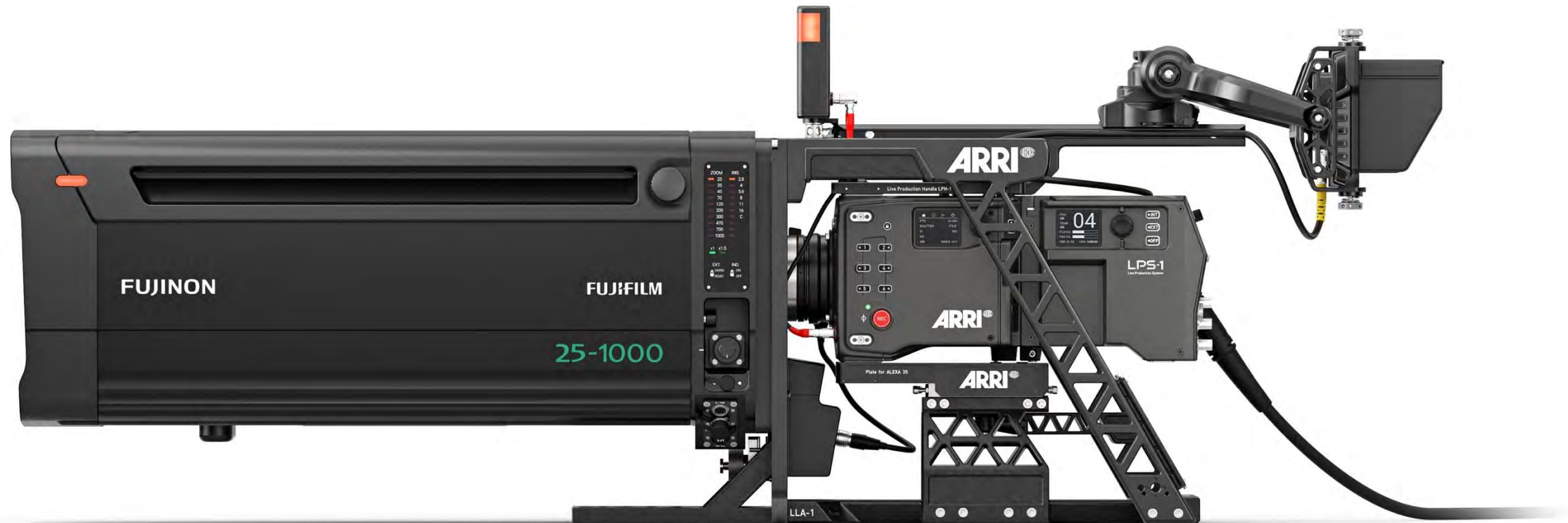
Stabilizer Adapter Mounts

▪ Stabilizer Adapter Mounts (SAM)

- Fast mounting of camera onto camera stabilizing systems

ALEXA 35 LIVE - MULTICAM SYSTEM

LARGE LENS ADAPTER LLA-1



ALEXA 35 LIVE - MULTICAM SYSTEM

LARGE LENS ADAPTER LLA-1



- **Large Lens Adapter**
 - Quick-fit clamping mechanism for fast camera mounting
 - Precision mounting plates for different cameras
 - Lightweight and strong, multiple mounting points
- **Compatibility**
 - Fits all PL or B4 box lenses
 - Clamping mechanism range also fits with PL/B4 adapter
- **Cable Hirose to Box Lens**
 - Connection between PL Mount (Hirose) and Box lens
- **LLA-1 Control Module**
 - Planned for Q3 2024
 - Replaces Cable Hirose to Box Lens
 - Additional connections for ECS controllers
- **camRade rainCover OB/EFP Large**
- **LLA-1 Case**



Cable Hirose to Box Lens



LLA-1 Control Module



Large Lens Adapter LLA-1



LLA-1 Plate for ALEXA 35



LLA-1 Plate for Mini/LF



LLA-1 Plate for AMIRA Live



camRade rainCover OB/EFP Large



LLA-1 Case







ALEXA 35 LIVE - MULTICAM SYSTEM

ROBUST AND RELIABLE



- **Reliability is mission critical during live productions**
- **ARRI cameras have stood the test of time on even the roughest remote locations**
 - LPS-1 FCA is specified and tested like any ARRI camera
 - Sturdy aluminum housing with strict separation of cooling and electronics
 - Splashproof, dust proof and silent
 - Largest operating temperature range in the industry: -20° C to +45° C / -4° F to +113° F
- **Dependable, established global ARRI service network**
 - Single point of contact for support; same manufacturer supports the camera, FCA, FBS and accessories
 - Live production service contracts



ALEXA 35 LIVE - MULTICAM SYSTEM

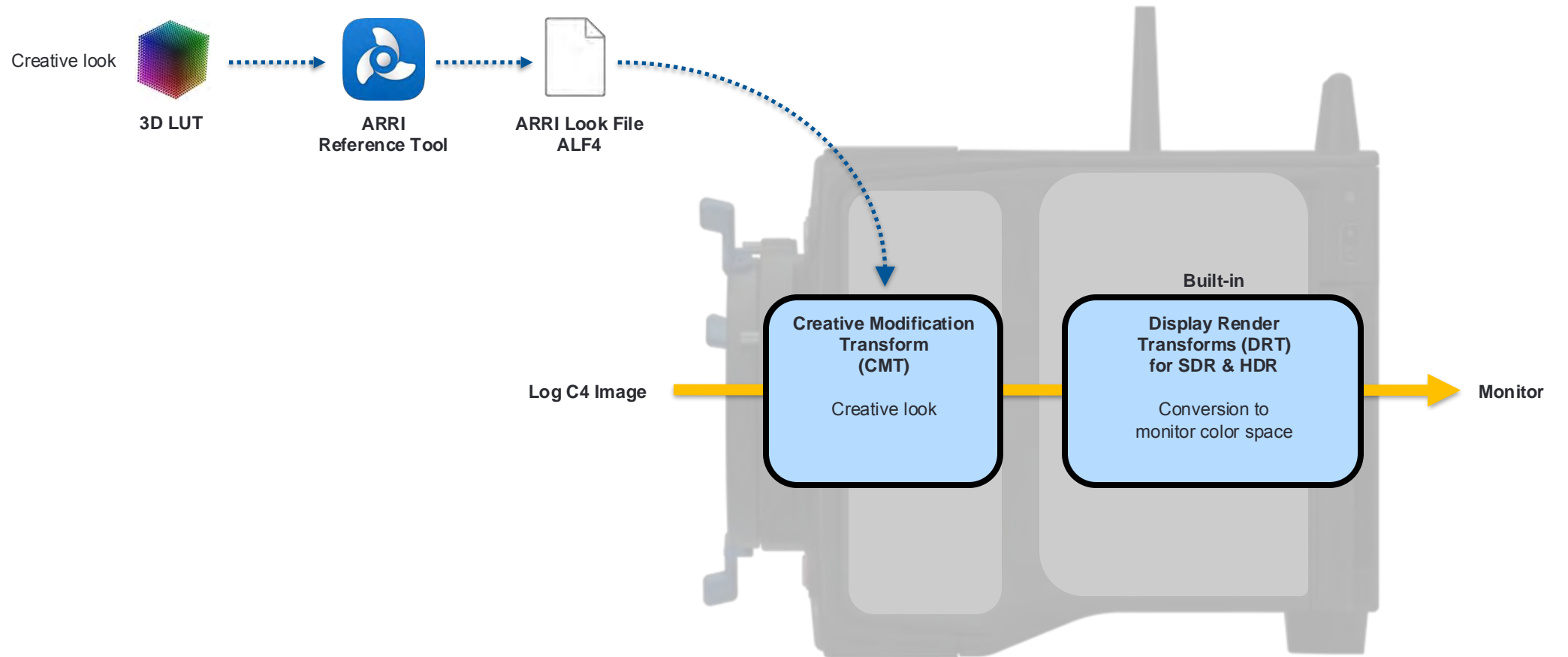
OTHER SETS & ARTICLES

- **Recommended Add-ons**
 - Skaarhoj RCP Pro ARRI V2B
 - CCM-1 for Live Production Set
 - MVF-2 Viewfinder Set & Viewfinder Mounting Set VMB-5 or Viewfinder Mounting Set Cross Pipe
 - If you own an ALEXA 35 Live: ARRI LPL Lens Mount (LBUS) & ARRI PL-to-LPL-Adapter
 - If you own an ALEXA 35: PL Mount (Hirose)
- **Also available separately**
 - ALEXA 35 Multicam Support Set
 - Touchdown Base Plate, Touchdown Receiver Plate, Live Production Handle
 - Tally Light Module TLM-1, RIA-1 Bracket, Cable LBUS - LBUS (0.5m/1.5ft)
 - Large Lens Adapter Set (Basic, Regular)
- **Media, ARRI Signature lenses, TRINITY Live, 360 EVO remote head, ARRI and Claypaky lighting and many other products ...**
- **Planned**
 - Live Production Monitor LPM-1 Set
 - LLA-1 Control Module



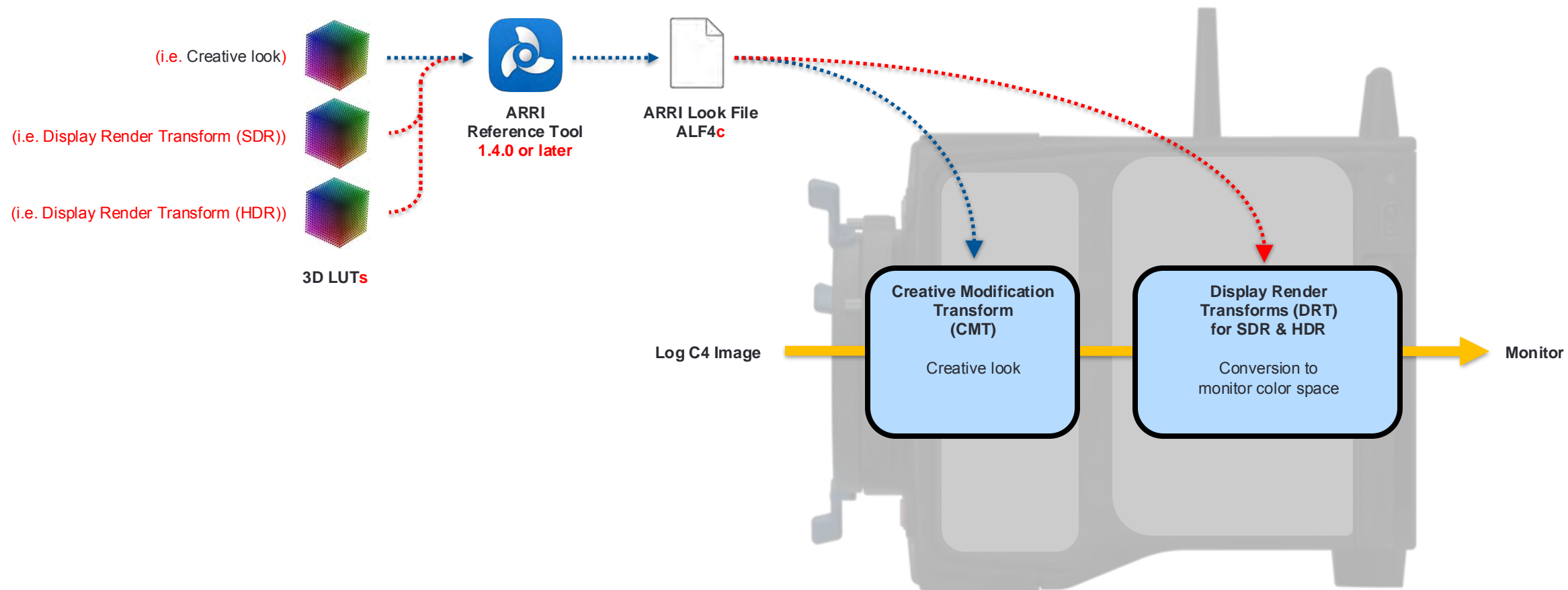
ALEXA 35/ALEXA 35 LIVE

ARRI COLOR MANAGEMENT



ALEXA 35 ONLY

CUSTOM COLOR MANAGEMENT



ALEXA 35 LIVE - MULTICAM SYSTEM

SUMMARY



- A complete production toolset for the requirements of live content producers
- Cinematic ARRI look
- Seamless integration into existing live production infrastructures





Thanks!